



Fact Sheet

Developer	Novelty Corporation Pte Ltd
Description	Proposed erection of a block of 26-storey residential flats (total 180 Units) with 4 storey car parks and swimming pool on 14 th storey sky terrace on lot 00709N TS 28 at Newton Road
Location	26 Newton Road S 307957
District	11
Site Area	3,491.00 sqm / 37,577.12 sqft
Tenure	Freehold
Total Units	180
Total Car Park Lots	180
No. of Lifts	2
Architect	JGP Architecture (S) Pte Ltd
Civil & Structural Engineer	KH Consultants
Mechanical & Electrical Engineer	Elead Associates Private



Developer's Track Records

Long established as one of the foremost luxury developer amongst an elite few in Asia. Novelty Group is one that continually pushes the boundaries of standard to deliver more distinctive, sustainable high-end residential living, within or outside of prominent districts.

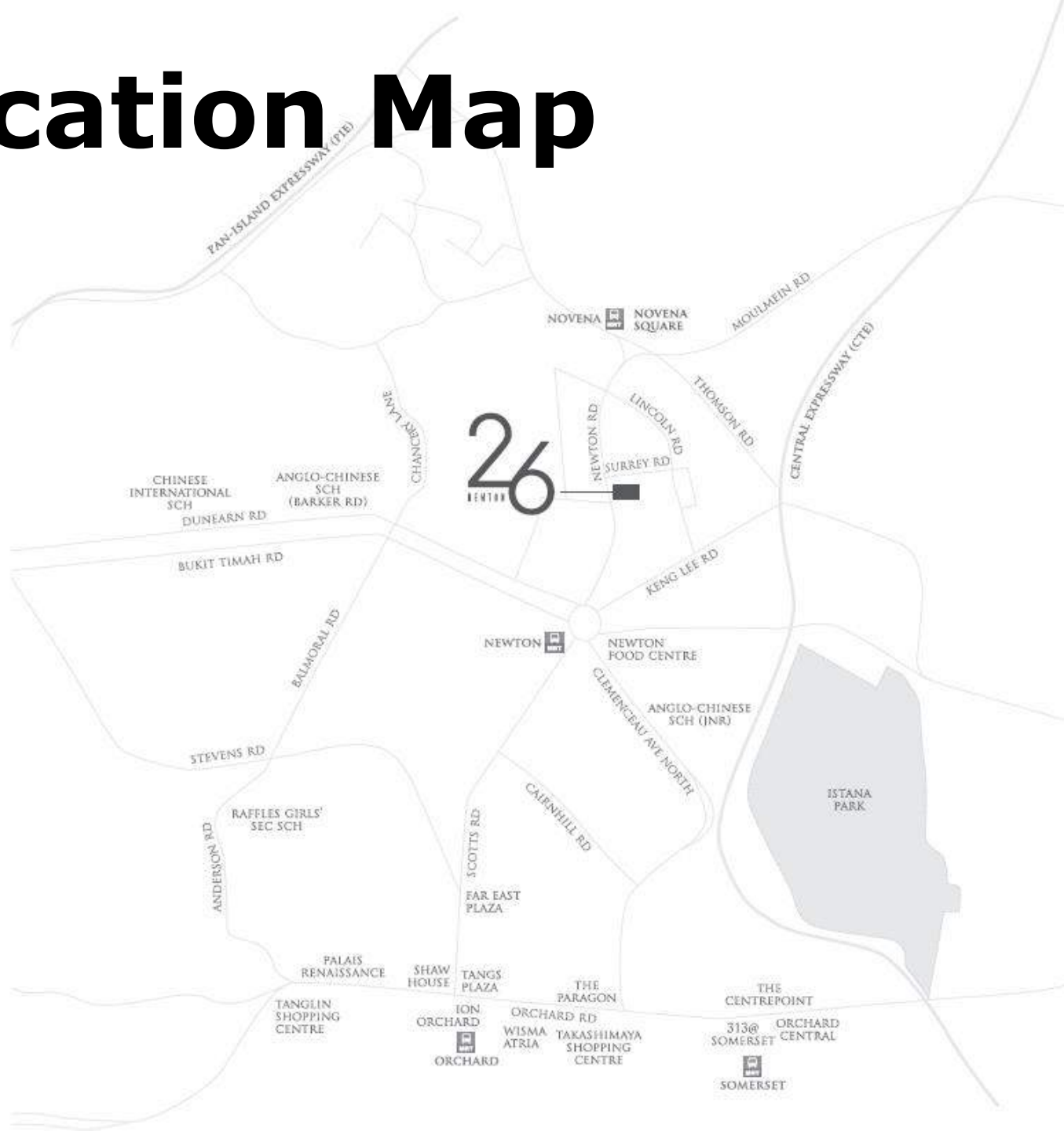
Current Launches (Residential)

- Espada
- Whitehouse Residences
- Lucida
- Iresidences
- Bluwaters 2

(Industrial)

- Novelty Techpoint
- Novelty Bizcenter

Location Map





Amenities

MRT Station

- Newton MRT Station - 461m
- Interchange station on the Downtown and North South lines

Hawker Centre

- Newton Food Centre - 480m



Schools < 1KM

- St Joseph's Institution Junior
- Anglo-Chinese School (Primary)
- Anglo-Chinese School (Junior)
- Anglo-Chinese School (Barker Road)



SITEPLAN



1ST STOREY

- A. SENTRY POINT
- B. DROP OFF POINT
- C. CAR PARK
(OPEN TO SKY)
- D. GENSET
- E. BIN CENTRE

5TH STOREY

- 1. CHILDREN PLAYGROUND
- 2. PAVILION WITH
BBQ CORNER

SKY TERRACE PLAN - 14TH FLOOR



LEGEND:

1. GYMNASIUM
2. CHANGING ROOM CUM TOILET AND SHOWER POINT
3. LOBBY
4. SWIMMING POOL
5. POOL DECK
6. OUTDOOR SHOWER
7. WADING POOL
8. CABANA

Available Unit Types

A1-P	1+1 PH	87sqm/936sqft
A2-P	1+1 PH	86sqm/926sqft
A3-P	1+1 PH	104sqm/1119sqft
B-P	2BR PH	108sqm/1163sqft
C-G	2BR+Study	72sqm/775sqft
C	2BR+Study	72sqm/775sqft
C-P	2BR+Study PH	143sqm/1539sqft
C1-G	2BR+Study	128sqm/1378sqft
C1	2BR+Study	72sqm/775sqft
C1-P	2BR+Study PH	143sqm/1539sqft
C2	2BR+Study	72sqm/775sqft
C2-P	2BR+Study PH	139sqm/1496sqft

TYPE A1-P

(1+1-BEDROOM PENTHOUSE)

UNIT #25-09
AREA 936 SQFT / 87 SQM



LOWER STOREY

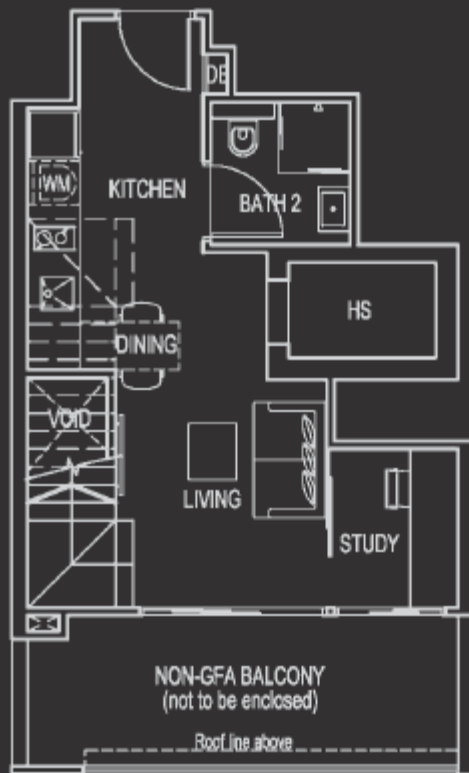


UPPER STOREY

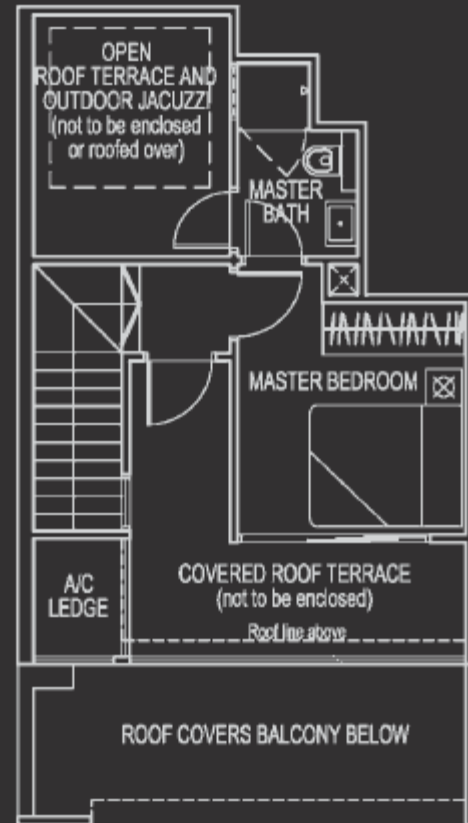
TYPE A2-P

(1+1-BEDROOM PENTHOUSE)

UNIT #25-08
AREA 926 SQFT / 86 SQM



LOWER STOREY



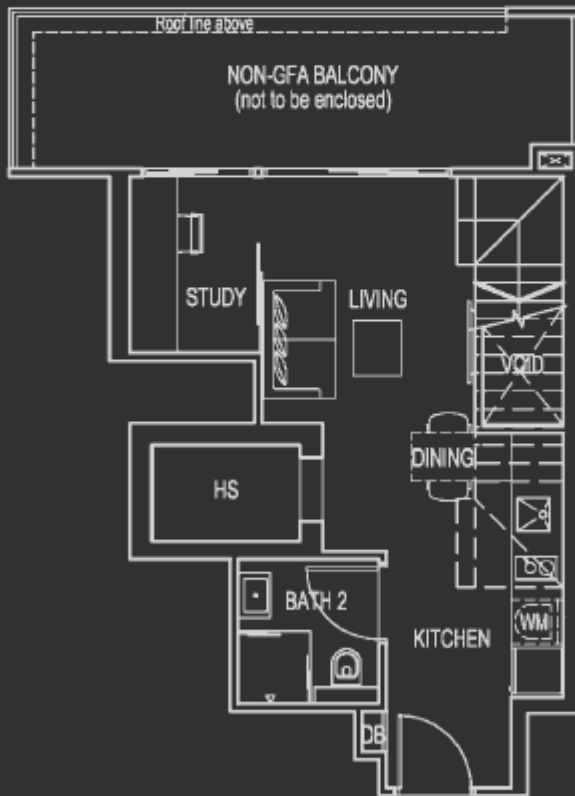
UPPER STOREY

TYPE A3-P

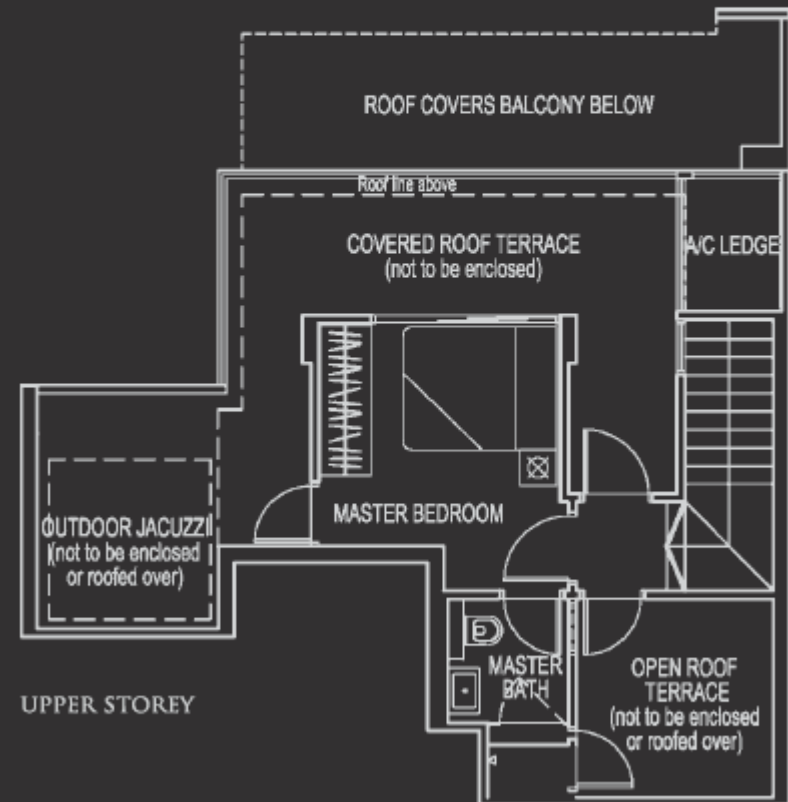
(1+1-BEDROOM PENTHOUSE)

UNIT #25-04

AREA 1119 SQFT / 104 SQM



LOWER STOREY

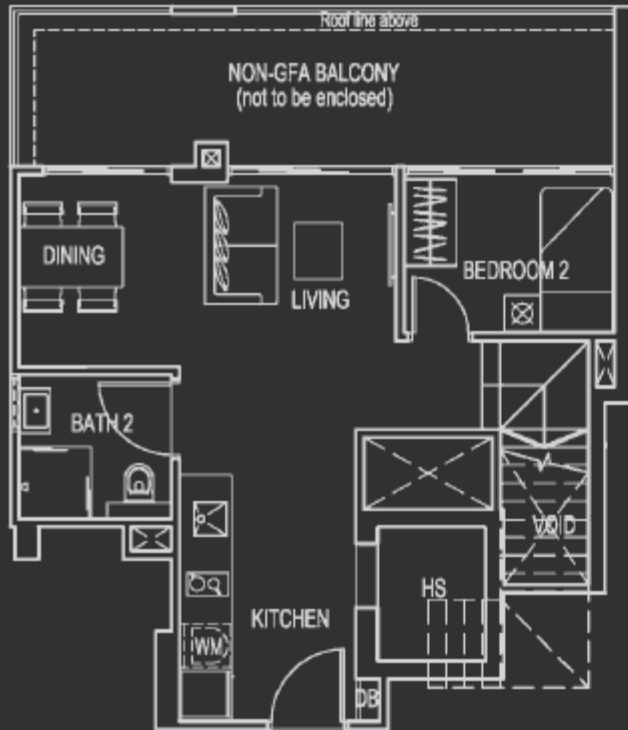


UPPER STOREY

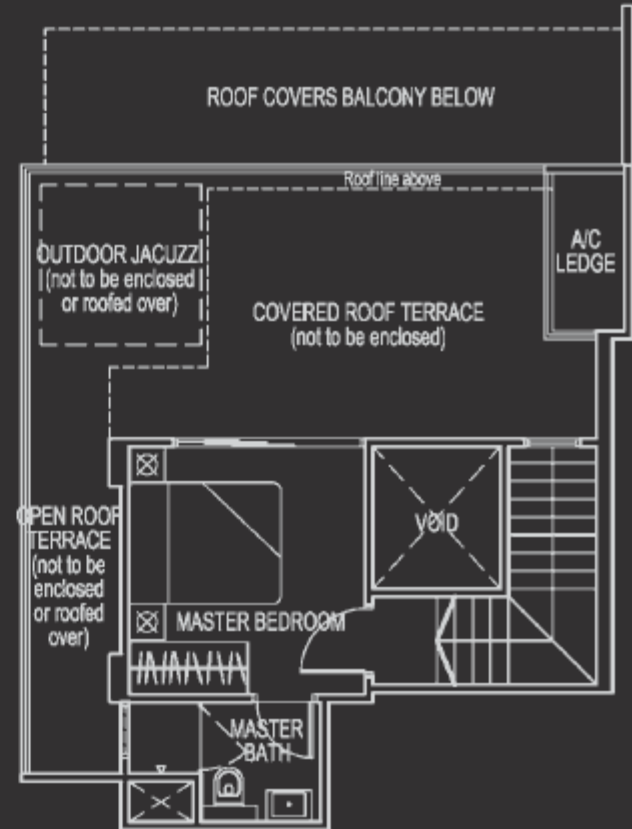
TYPE B-P

(2-BEDROOM PENTHOUSE)

UNIT #25-05
AREA 1163 SQFT / 108 SQM



LOWER STOREY

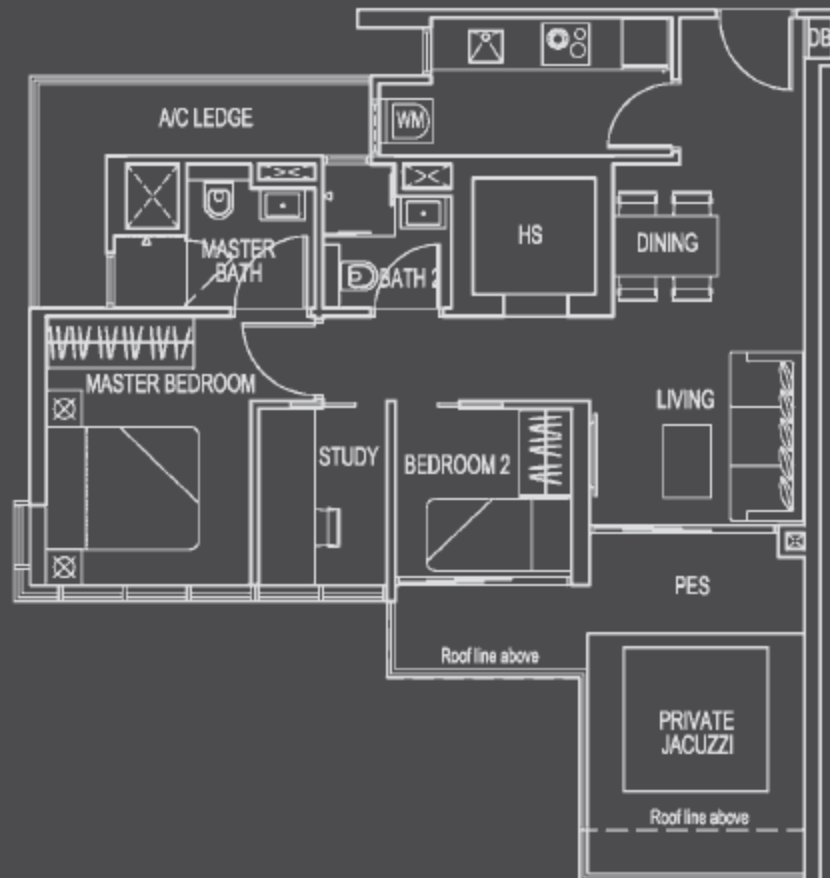


UPPER STOREY

TYPE C-G

(2+1-BEDROOM)

UNIT #05-02
AREA 850 SQFT / 79 SQM

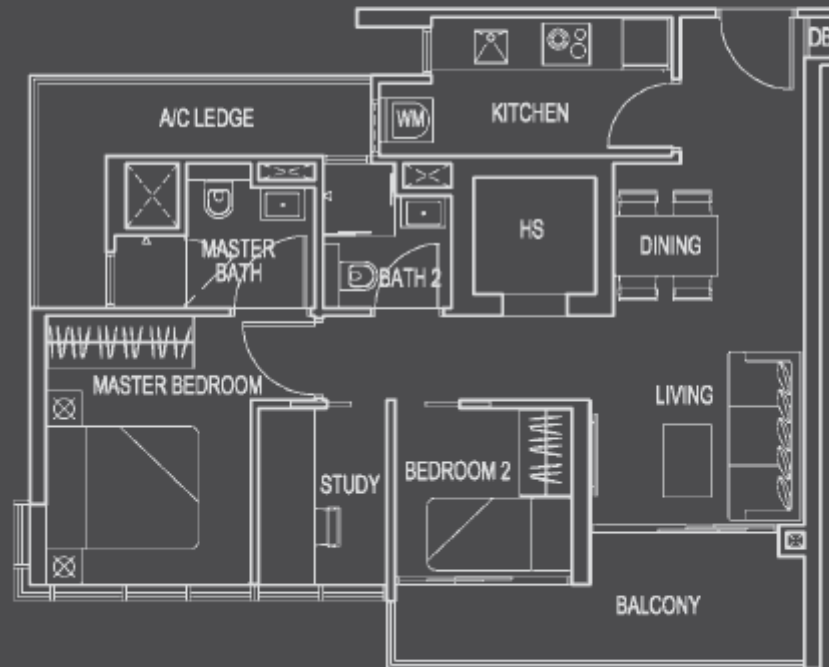


TYPE C

(2+1-BEDROOM)

UNIT #06-02 TO #13-02, #15-02 TO #24-02

AREA 775 SQFT / 72 SQM

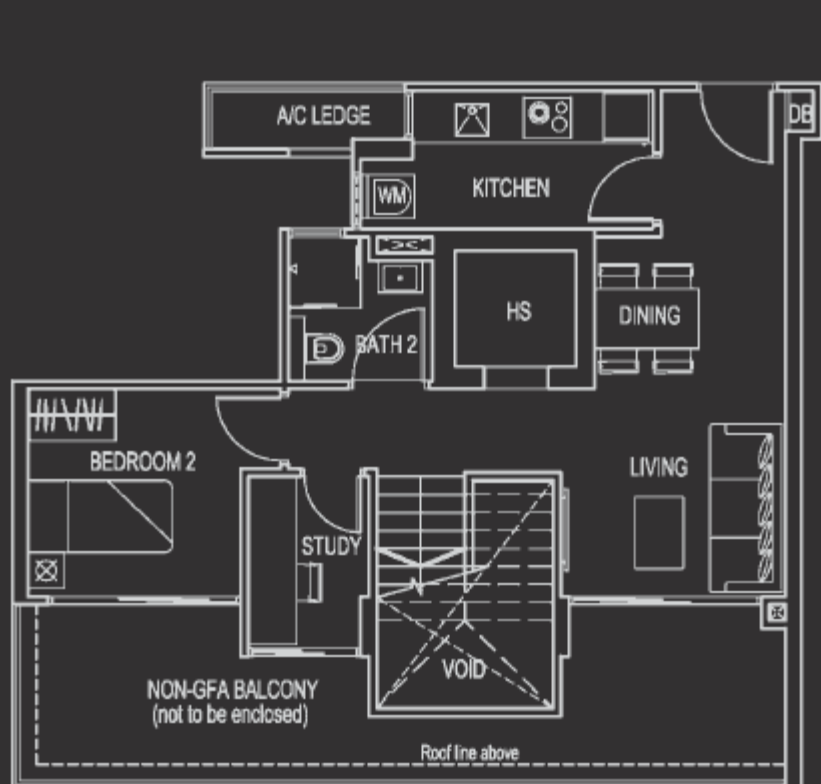


TYPE C-P

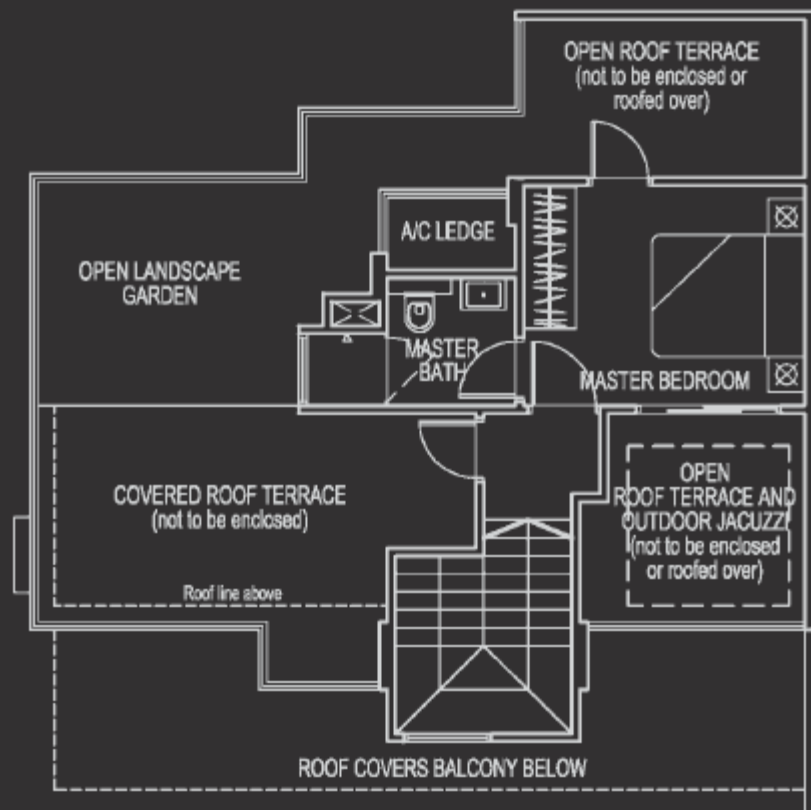
(2+1-BEDROOM PENTHOUSE)

UNIT #25-02

AREA 1539 SQFT / 143 SQM



LOWER STOREY



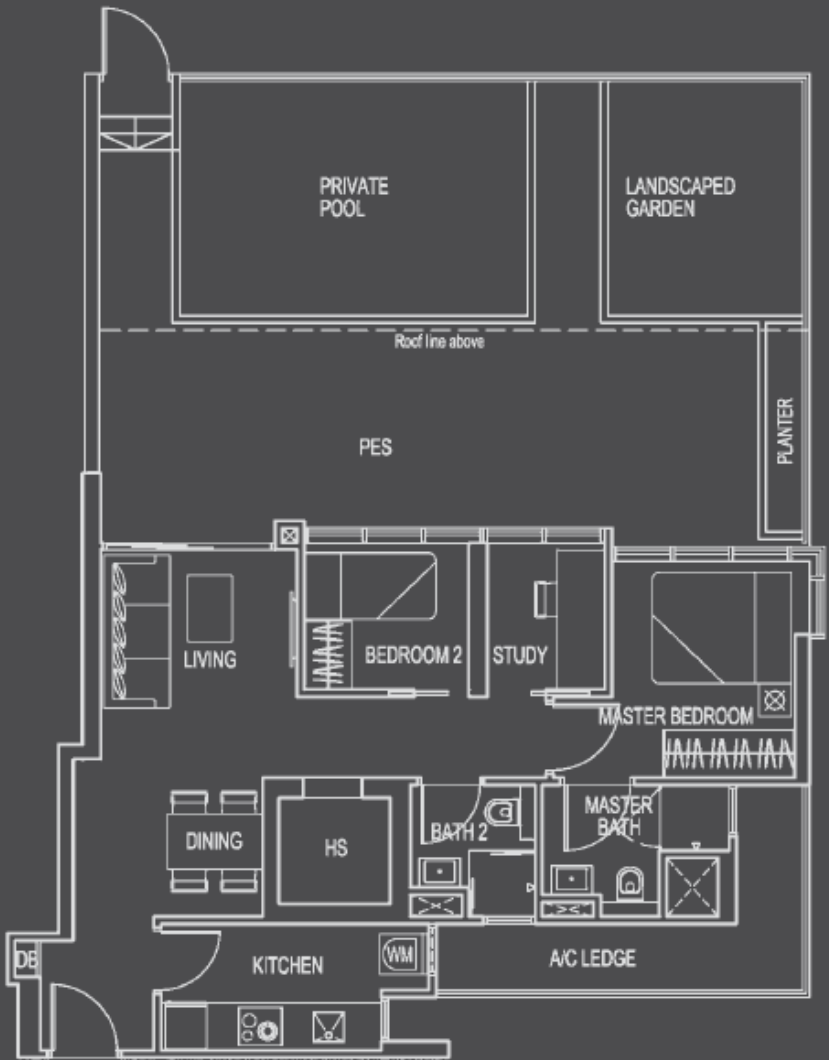
UPPER STOREY

TYPE C1-G

(2+1-BEDROOM)

UNIT #05-06

AREA 1378 SQFT / 128 SQM



TYPE C1

(2+1-BEDROOM)

UNIT #06-06 TO #13-06, #15-06 TO #24-06
AREA 775 SQFT / 72 SQM

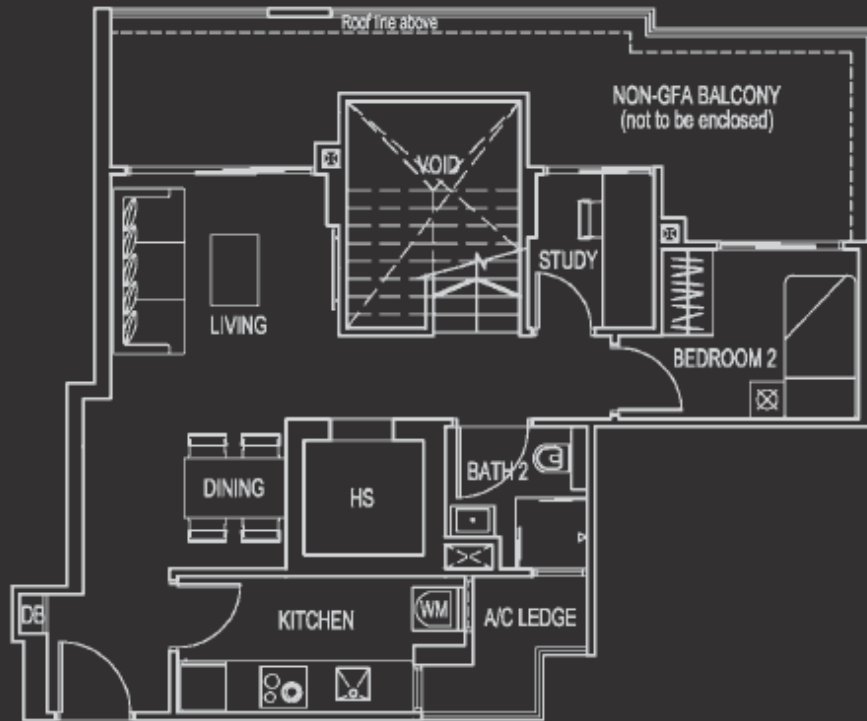


TYPE C1-P

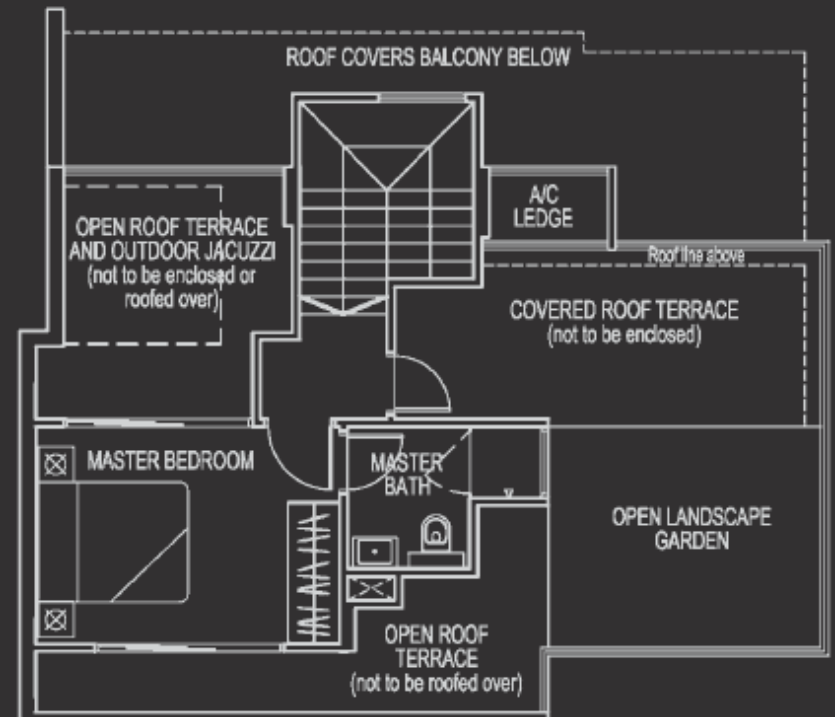
(2+1-BEDROOM PENTHOUSE)

UNIT #25-06

AREA 1539 SQFT / 143 SQM



LOWER STOREY



UPPER STOREY

TYPE C2

(2+1-BEDROOM)

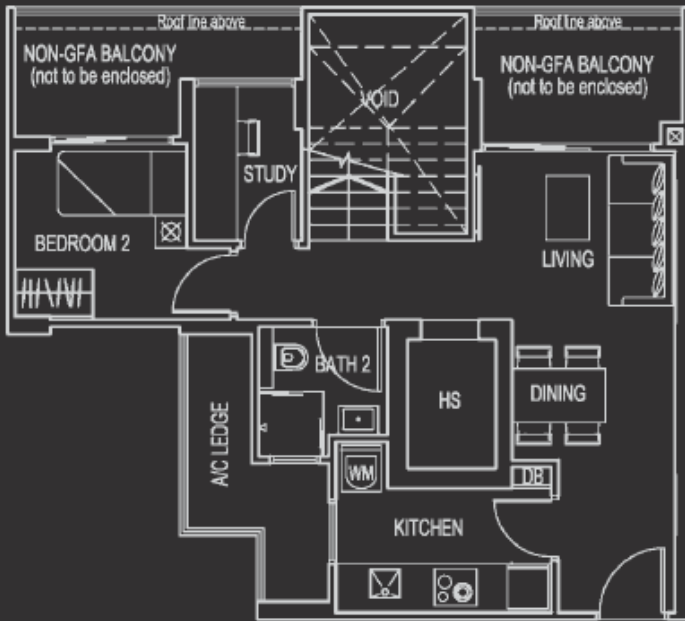
UNIT #06-03 TO #13-03, #15-03 TO #24-03
AREA 775 SQFT / 72 SQM



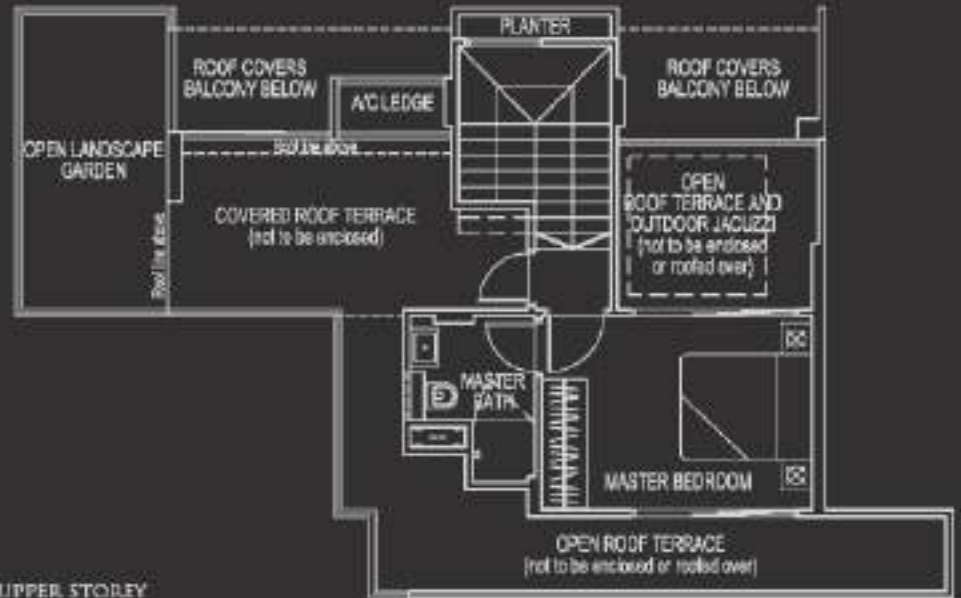
TYPE C2-P

(2+1-BEDROOM PENTHOUSE)

UNIT #25-03
 AREA 1496 SQFT / 139 SQM



LOWER STOREY



UPPER STOREY